

Oakhurst Eventing Derby

July 21st, 2024

EV60

Orange Numbers – Blue Background

1. Blue & White - SJ
2. Yellow & White - SJ
3. Red & White - SJ
4. Blue & Yellow - SJ
5. Brown & White - SJ
6. Blue & White - SJ
7. Natural - SJ
8. Green & White - SJ
9. Lovely Log - XC
10. Lefty Log - XC
11. Round the Bend Roll Top - XC
12. Lonely Log - XC
13. Lifted Logs - XC
14. Remaining Roll Top - XC

Distance: 985m
Speed: 300m/min
Optimum Time: 3:17



- Trailer parking will be around the main barn on the gravel. See Mark for instructions.
- Coffee will be available at no charge on Sunday at the Secretary.
- Sandwiches are available for purchase at the Secretary building.
- The used tack sale will be open all day Sunday next to the Secretary building.
- To add extra jump rounds, see the Secretary.
- HAVE FUN!!

Oakhurst Eventing Derby

July 21st, 2024

EV75

White Numbers – Yellow Background

1. Blue & White - SJ
2. Yellow & White - SJ
3. Red & White - SJ
4. Blue & Yellow - SJ
5. Brown & White - SJ
6. Blue & White - SJ
7. Natural - SJ
8. Green & White - SJ
9. Log on Box - XC
10. Table - XC
11. Cabin - XC
12. Log or Ditch - XC
13. Boathouse - XC
14. Pheasant Feeder - XC
15. Chair Roll - XC
16. Bank - XC
17. Roll Top - XC

Distance: 1200m
Speed: 300m/min
Optimum Time: 4:00



- Trailer parking will be around the main barn on the gravel. See Mark for instructions.
- Coffee will be available at no charge on Sunday at the Secretary building.
- Sandwiches are available for purchase at the Secretary building.
- The used tack sale will be open all day Sunday next to the Secretary building.
- To add extra jump rounds, see the Secretary.
- HAVE FUN!!

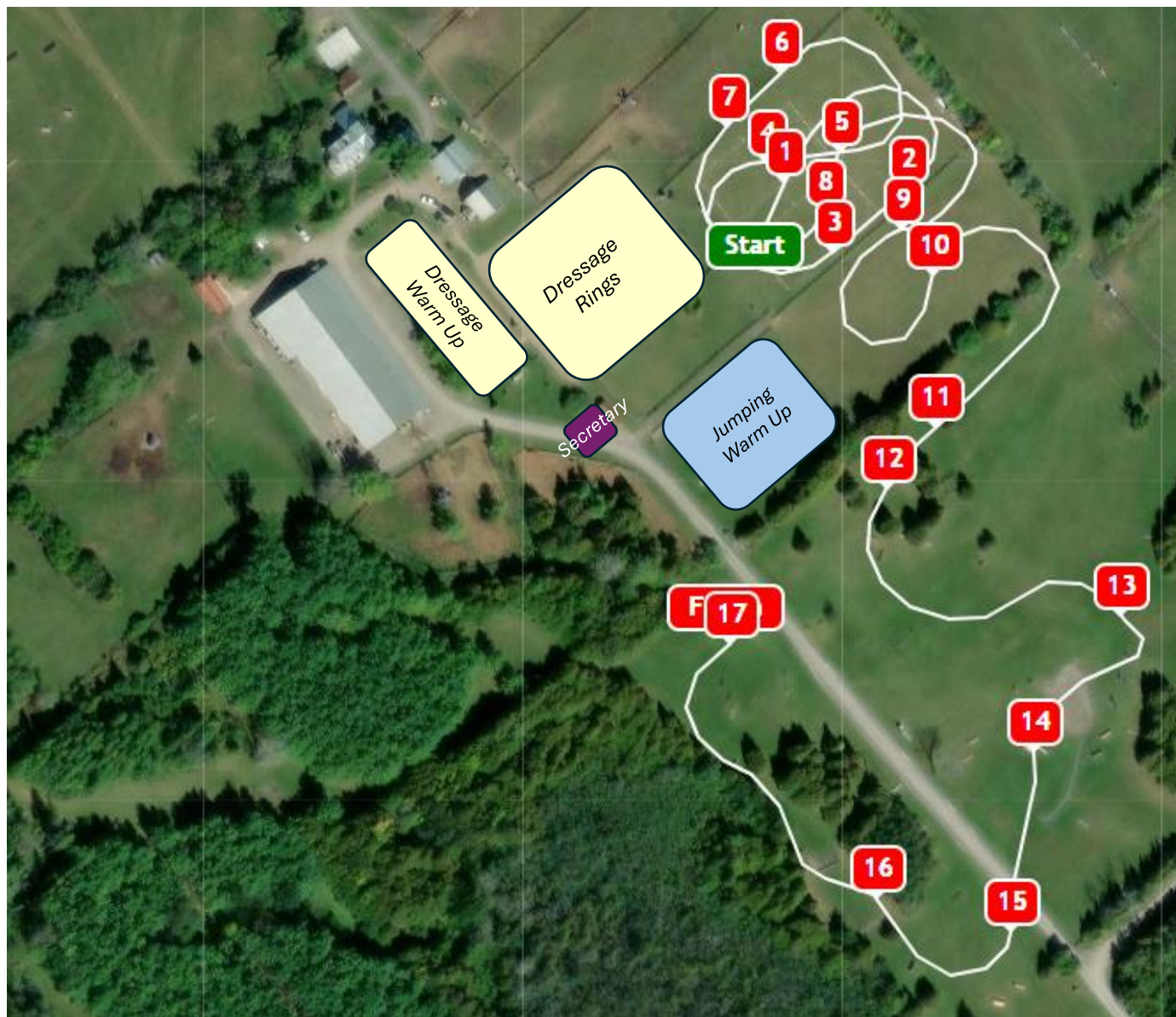
Oakhurst Eventing Derby July 21st, 2024

EV85

Red Numbers – White Background

1. Blue & White - SJ
2. Yellow & White – SJ
3. Red & White - SJ
4. Blue & Yellow - SJ
5. Brown & White - SJ
6. Blue & White - SJ
7. Natural - SJ
8. Green & White - SJ
9. Bench - XC
10. Table - XC
11. Cabin - XC
12. Roadhouse - XC
13. Boathouse - XC
14. Pheasant Feeder - XC
15. Chair Roll - XC
16. Bank - XC
17. Roll Top - XC

Distance: 1275m
Speed: 325m/min
Optimum Time: 3:56



- Trailer parking will be around the main barn on the gravel. See Mark for instructions.
- Coffee will be available at no charge on Sunday at the Secretary building.
- Sandwiches are available for purchase at the Secretary building.
- The used tack sale will be open all day Sunday next to the Secretary building.
- To add extra jump rounds, see the Secretary.
- HAVE FUN!!

Oakhurst Eventing Derby

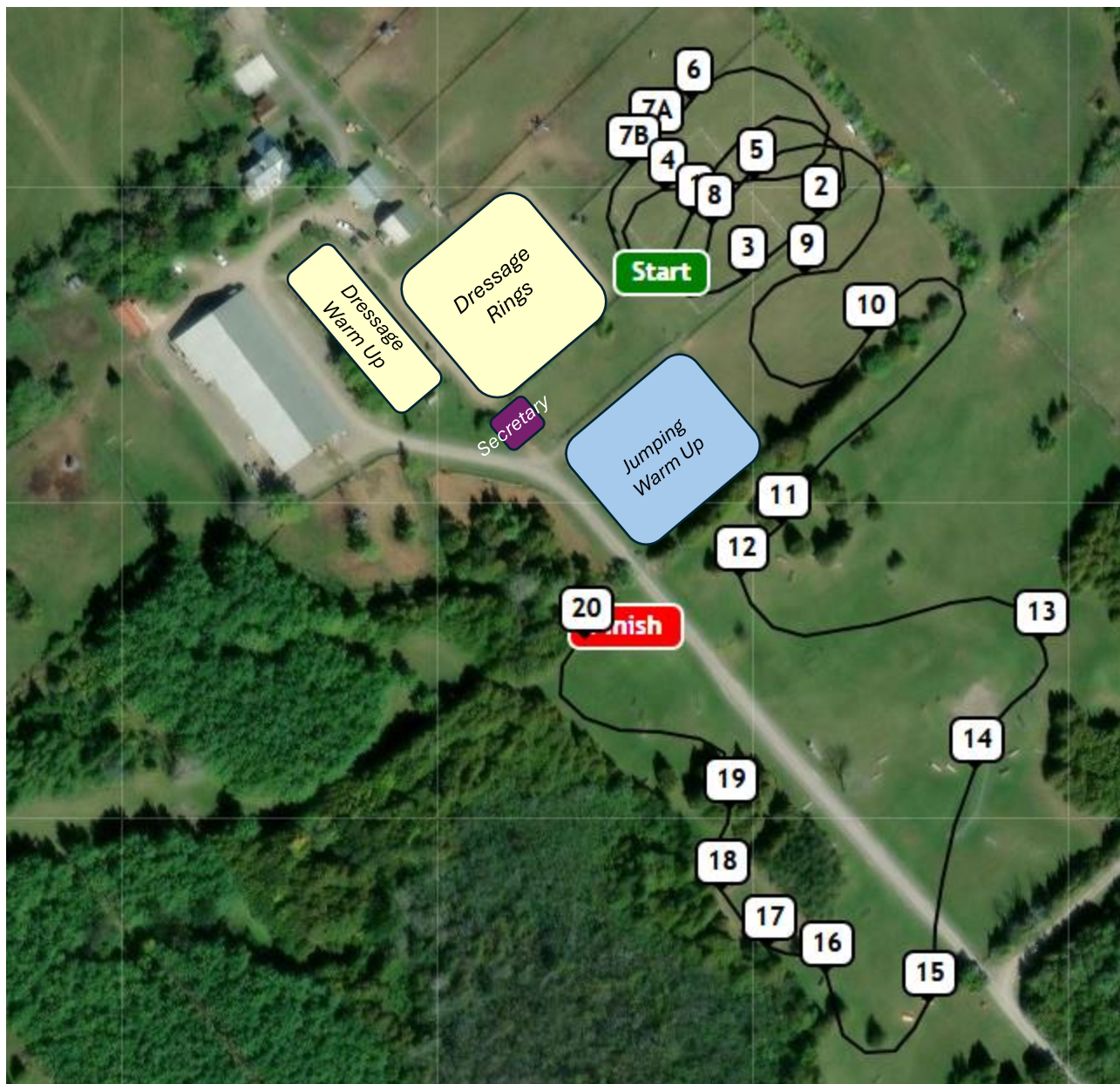
July 21st, 2024

EV90

Black Numbers - White Background

1. Blue & White - SJ
2. Yellow & White - SJ
3. Red & White - SJ
4. Blue & Yellow - SJ
5. Brown & White - SJ
6. Blue & White - SJ
- 7a & b. Natural - SJ
8. Green & White - SJ
9. Bench - XC
10. Table - XC
11. Roadhouse - XC
12. Corner - XC
13. Boathouse - XC
14. Pheasant Feeder - XC
15. Zig Zag - XC
16. Cabin - XC
17. Up - XC
18. Down - XC
19. Fluffy 2.0 - XC
20. Roll Top - XC

Distance: 1360m
Speed: 350m/min
Optimum Time: 3:54



- Trailer parking will be around the main barn on the gravel. See Mark for instructions.
- Coffee will be available at no charge on Sunday at the Secretary building.
- Sandwiches are available for purchase at the Secretary building.
- The used tack sale will be open all day Sunday next to the Secretary building.
- To add extra jump rounds, see the Secretary.
- HAVE FUN!!

Oakhurst Eventing Derby

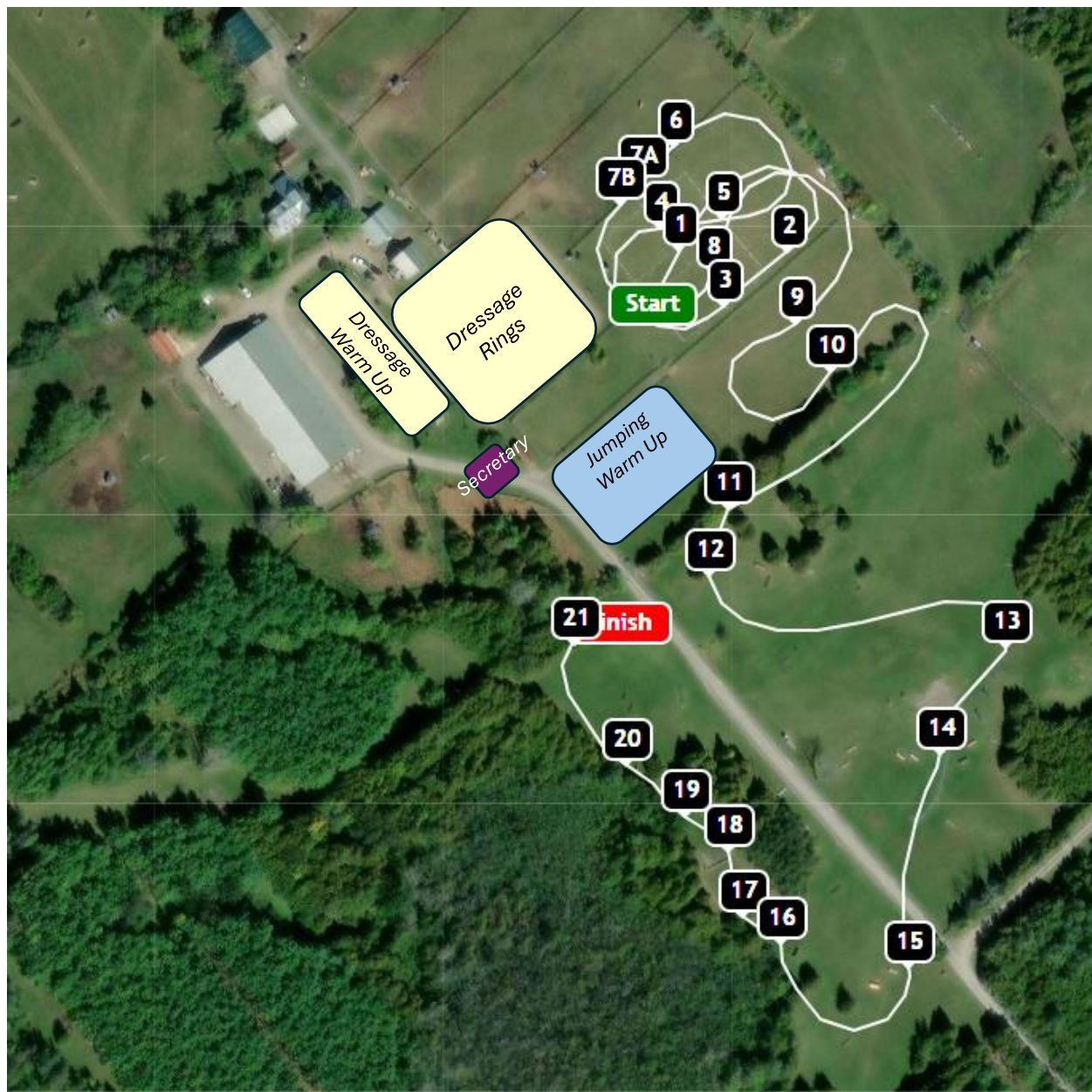
July 21st, 2024

EV100

White Numbers - Black Background

1. Blue & White - SJ
2. Yellow & White - SJ
3. Red & White - SJ
4. Blue & Yellow - SJ
5. Brown & White - SJ
6. Blue & White - SJ
- 7a & b. Natural - SJ
8. Green & White - SJ
9. Bench - XC
10. Table - XC
11. Roadhouse - XC
12. Corner - XC
13. Boathouse - XC
14. Pheasant Feeder - XC
15. Ditch & Wall - XC
16. Cabin - XC
17. Up - XC
18. Down - XC
19. Fruit Stand - XC
20. Table - XC
21. Roll Top - XC

Distance: 1385m
Speed: 400m/min
Optimum Time: 3:28



- Trailer parking will be around the main barn on the gravel. See Mark for instructions.
- Coffee will be available at no charge on Sunday at the Secretary building.
- Sandwiches are available for purchase at the Secretary building.
- The used tack sale will be open all day Sunday next to the Secretary building.
- To add extra jump rounds, see the Secretary.
- HAVE FUN!!